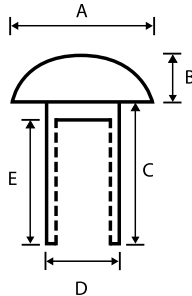




## FICHA TÉCNICA

### TUERCA BARRIL CABEZA DE BOTÓN - ACERO INOXIDABLE A2



### DIMENSIONES (mm)

MEDIDAS	M4	M5	M6	M6	M8	M8	M10	M12
DIMENSIONES	10 mm	10 mm	12 mm	25 mm	16 mm	30 mm	20 mm	25 mm
<b>A</b>	9.2	10.2	11.8	11.8	14.6	14.6	18.5	21
<b>B</b>	2.7	3.3	4.4	4.4	5	5	5.8	6.6
<b>C</b>	10	10	12	25	16	30	20	25
<b>D</b>	5.2	6.2	7.9	7.9	9.9	9.9	12.5	16
<b>E</b>	6	6	9	20	12	25	14	20

LONGITUD GROSOR	10 mm	12mm	16mm	20mm	25mm	30 mm	DRIVER SIZE
<b>M4 x 0.7</b>	RTBBN 0410						<b>T20</b>
<b>M5 x 0.8</b>	RTBBN 0510						<b>T25</b>
<b>M6 x 1.0</b>		RTBBN 0612			RTBBN 0625		<b>T30</b>
<b>M8 x 1.25</b>			RTBBN 0816			RTBBN 0830	<b>T40</b>
<b>M10 x 1.5</b>				RTBBN 1020			<b>T45</b>
<b>M12 x 1.75</b>					RTBBN 1225		<b>T55</b>

### MATERIAL Y ACABADO

**Material:** Acero inoxidable A2

**Tratamiento de calor:** Ninguno

**Acabado:** Color natural